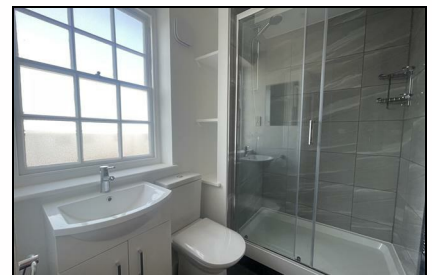
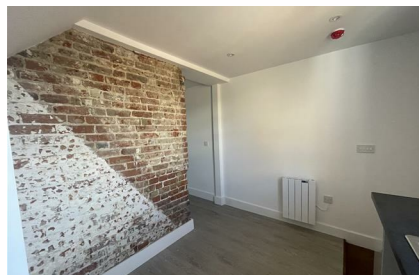


Wincheap
Canterbury
CT1 3BE

£1,150 Per Calendar Month

Finn's
82 Castle Street
Canterbury
CT1 2QD
t: 01227 452111
e: canterbury@finns.co.uk
www.finns.co.uk




A completely refurbished two bedroom cottage close to the Wincheap roundabout and minutes from the centre of Canterbury. As you enter the property you are greeted by a modern kitchen with some integrated appliances, this flows nicely into the living room with exposed brick. Upstairs you will find a double bedroom and modern shower room and a further staircase leading to another double bedroom. There is a separate charge of £200.00 per month for electricity and water.

- Refurbished two bedroom cottage
- Close to city centre
- Walking distance to Canterbury East station
- Council Tax band B
- EPC E
- Available 4 February 2026
- Sorry no pets
- Deposit £1320



Viewing: By appointment through Finn's, Canterbury
Telephone: 01227 452111

Council Tax:
Date: These particulars were prepared on: 4th February 2026

Energy Efficiency Rating		
	Current	Potential
Very energy efficient - lower running costs		
(92 plus) A		
(81-91) B		
(69-80) C		
(55-68) D		
(39-54) E		
(21-38) F		
(1-20) G		
Not energy efficient - higher running costs		
England & Wales	EU Directive 2002/91/EC	

Agent's Note: Wherever appliances or services, fixtures or fittings have been mentioned in these particulars they have not been tested by us. Measurements should not be relied upon. Unless specifically referred to above all fitted carpets, curtains, fixtures and fittings and garden outbuildings and ornaments are excluded from the sale. None of the statements in these particulars are to be relied upon as statements or representatives of fact. Photographs are for guidance only and do not imply items shown are included in the sale - some aspects may have changed since they were taken. No person in the employment of Finn's has authority to give any representation or warranty in relation to this property.

FINN'S CANTERBURY
82 Castle Street
Canterbury
Kent CT1 2QD
Lettings: 01227 452111

FINN'S SANDWICH
2 Market Street
Sandwich
Kent CT13 9DA
Lettings: 01304 614471

FINN'S ST NICHOLAS AT WADE
The Packhouse
Wantsum Way
St Nicholas at Wade
Kent CT7 0NE
01843 848320

